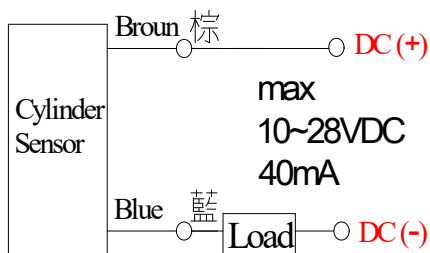
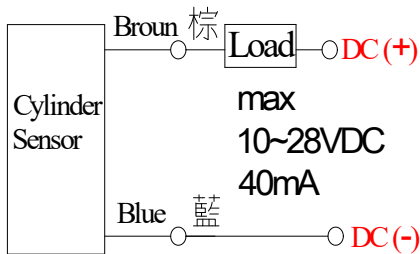


型號 Auto switch model

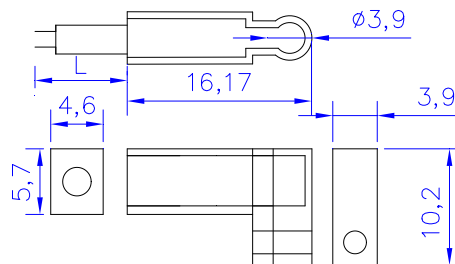
LM-9VS (L型 / 具過載保護)



電線方向 Electrical entry direction	180°
出線方式 Wiring type	2 - wire
輸出方式 Output type	N,O (Normally open)
適用負載 Applicable load	24 VDC Relay , PLC
輸入電壓 Power supply voltage	/
消耗電流 Current consumption	/
負載電壓 Load voltage	24 VDC (10 to 26.5 VDC)
負載電流 Load current	50 mA
內部壓降 Internal voltage drop	≤ 4.5 V
洩漏電流 Leakage current	≤ 0.2 mA 【24VDC】
指示灯 Indicator light	Red LED
周圍溫度 Ambient temperature	-5 ~ 60°C
依據標準 Standard	UL , CE



● 線長 Wire length	誤差 Tolerance	重量 Weight
1M	± 30 mm	
2M	± 60 mm	
3M	± 90 mm	
5M	± 150 mm	



保護裝置 Protection circuit

	Yes	No
電源電壓反接 Power supply voltage reversal	●	
突波電壓保護 Transient voltage protection	●	
過電流保護 (瞬間電流) ≤ 2000mA Overcurrent protection (surge current) ≤ 2000mA	●	
短路保護 Short circuit protection		●

● 2 線式串接，作動時輸出負載電壓 : 24V – 4.5V x 2 pcs = 15V

2-wire with 2-switch AND connection :

Load voltage at ON = Power supply voltage – Residual voltage x 2 pcs = 24V – 4.5V x 2 pcs = 15V

● 2 線式並接，不作動時負載電壓 : 1 mA x 2 pcs x 3 KΩ = 6 V

2-wire with 2-switch OR connection :

Load voltage at OFF = Leakage current x 2 pcs x Load impedance = 1 mA x 2 pcs x 3 KΩ = 6 V